

#TheSchoolConf

13 APRIL 2020

1700 HRS IST

(1130 HRS GMT)


# 07 SCHOOL LEADERS COUNTRIES MINUTES EACH

USA  
  
**LISA NAGEL**  
HEAD OF SCHOOL  
ST. ANNE'S SCHOOL OF ANNAPOLIS

UK  
  
**MATTHEW PEARCE**  
RECTOR  
THE GLASGOW ACADEMY

ITALY  
  
**JOHN NICHOLLS**  
CO DIRECTOR  
BILINGUAL EUROPEAN SCHOOL

GHANA  
  
**DR. MARY ASHUN**  
PRINCIPAL  
GHANA INTERNATIONAL SCHOOL

INDIA  
  
**SUSAN HOLMES**  
HEAD TEACHER  
NEHRU WORLD SCHOOL

SINGAPORE  
  
**ADAM PATTERSON**  
HEAD OF ELEMENTARY  
AUSTRALIAN INTERNATIONAL SCHOOL

AUSTRALIA  
  
**ALLAN SHAW**  
PRINCIPAL  
THE KNOX SCHOOL

## LOGGING INTO SCHOOL!

SCHOOLS' RESPONSE TO COVID 19 PANDEMIC

ZOOM WEBINAR

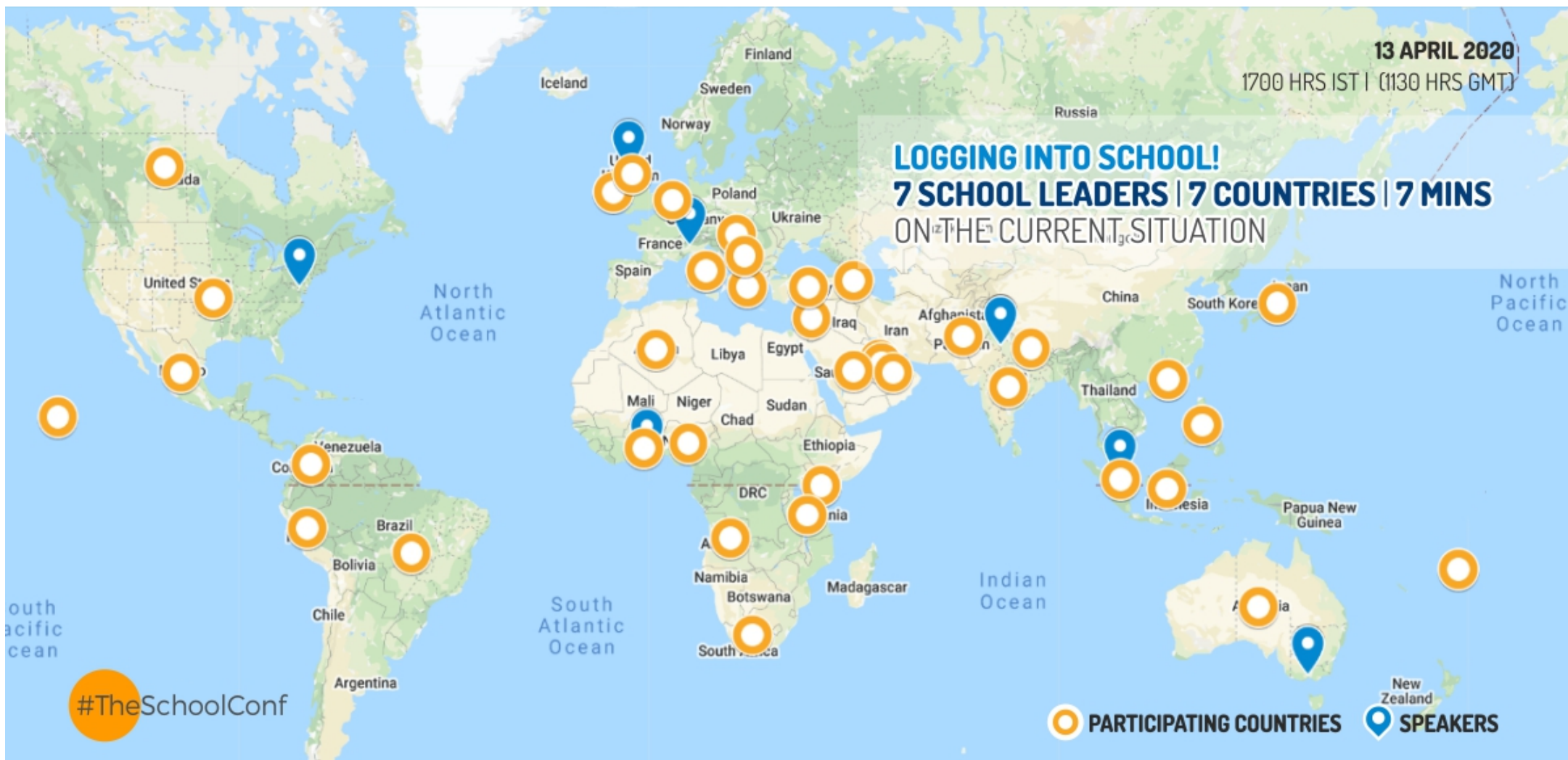
[REGISTER NOW](#)



13 APRIL 2020

1700 HRS IST | (1130 HRS GMT)

**LOGGING INTO SCHOOL!**  
**7 SCHOOL LEADERS | 7 COUNTRIES | 7 MINS**  
ON THE CURRENT SITUATION



#TheSchoolConf

Welcome to #theschoolconf. We are currently on MUTE till all participants join in. We will go live shortly. We are also live on FB @theschoolconf





Ghana  
International  
School

Motto: “Understanding of Each Other”

Principal's Office

# ‘Logging Into School’

The GIS Response to Covid 19 Pandemic  
13th April, 2020



# ACT 1: Pre-Covid Induced Shutdown

- All sections of the school used one/more of these platforms:
  - Google Classroom
  - Class Dojo
  - Google Hangouts
  - Zoom
  - Email
  - Whatsapp
- Attempts at Blended Learning
- Some Tech Use Training: All teachers have devices
- Constant (never ending) discussion about a blended learning program and the costs.



# ACT 2: During Covid Induced Shutdown

- Continued use of the platforms - Full Time
- Online Support & training led by the Virtual Learning Team (Standards Office & IT Department)
- Use of Surveys to receive feedback from students, teachers and parents
  - Cost of data
  - Cost of devices for multi-student families
  - Connectivity Issues
  - Workload for parents - partial lockdown in Ghana
  - Synchronous vs. Asynchronous
- **Staff Well-being**



# ACT 3: Post Covid-Induced Shutdown

**We cannot go back to doing school the way it was being done! Why?**

- Some children said they learned better online. How do we honour that?
  - Fewer distractions
  - Introverts felt less pressure to contribute to a lesson when it was online
  - The controls on platforms allowed students to be muted except the one the teacher called on; students felt empowered to let their voices be heard.
- Teacher preparedness; how do we avoid burnout?
  - weekly check ins
- Can we have VLE once a month for one week? Once a Term?
  - Who supervises children at home when parents are at work?
  - How do we continue to simulate for our community, the urgency we felt in Act 2?





Ghana International School

---

**Thank You**



# Social Emotional Learning in a Digital Environment



- Social and emotional connectedness is more critical than ever in a world of physical distancing
- Students require a sense of safety, belonging, and connection to succeed academically in a digital environment

“

**RELATIONSHIPS** before rigor

**GRACE** before grades

**PATIENCE** before programs

**LOVE** before lessons

• Brad Johnson  
EDUCATOR

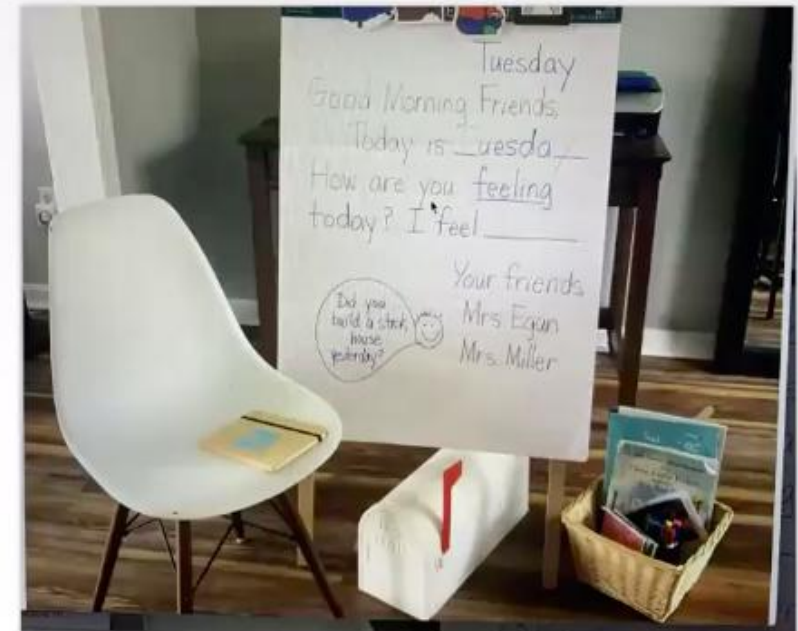
edutopia



# Student Learning



- Recognize that this is “not school as usual”
- Recall routines and habits
- Help students regulate





# Community Connection



- o Promote courageous, compassionate, candid communication
- o Connect with social media
- o Celebrate the community

## St. Anne's School of Annapolis, April 2

It's can be tough staying focused in a new work space. Ms. Fitzgerald put together a 40-minute playlist of student favorites called "Heard Around the Art Room!" Check it out on Spotify! #SASASTayssafe #IheartStAnnesSchool



## St. Anne's School of Annapolis, March 30

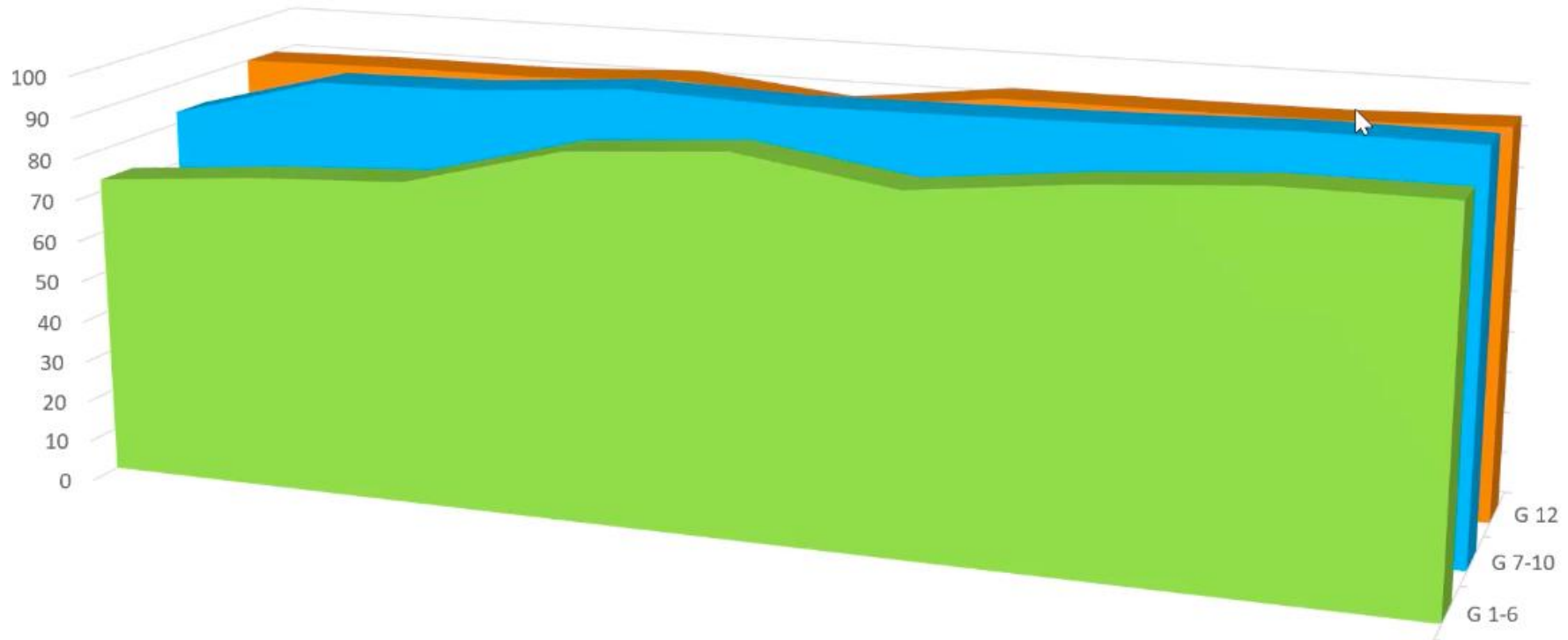
Here are just a few submissions for Masterpiece Monday! Last week we invited parents and students to draw a picture of *your best day* ☀️ Stay tuned for this week's #MasterPiece Monday muse! #SASASTayssafe







# Attendance Data







## How did we achieve this?

- Building confidence and trust in what we are doing
- Providing individual support for
  - parents
  - new students
  - current students
- Creating different models for different wings
- Taking feedback

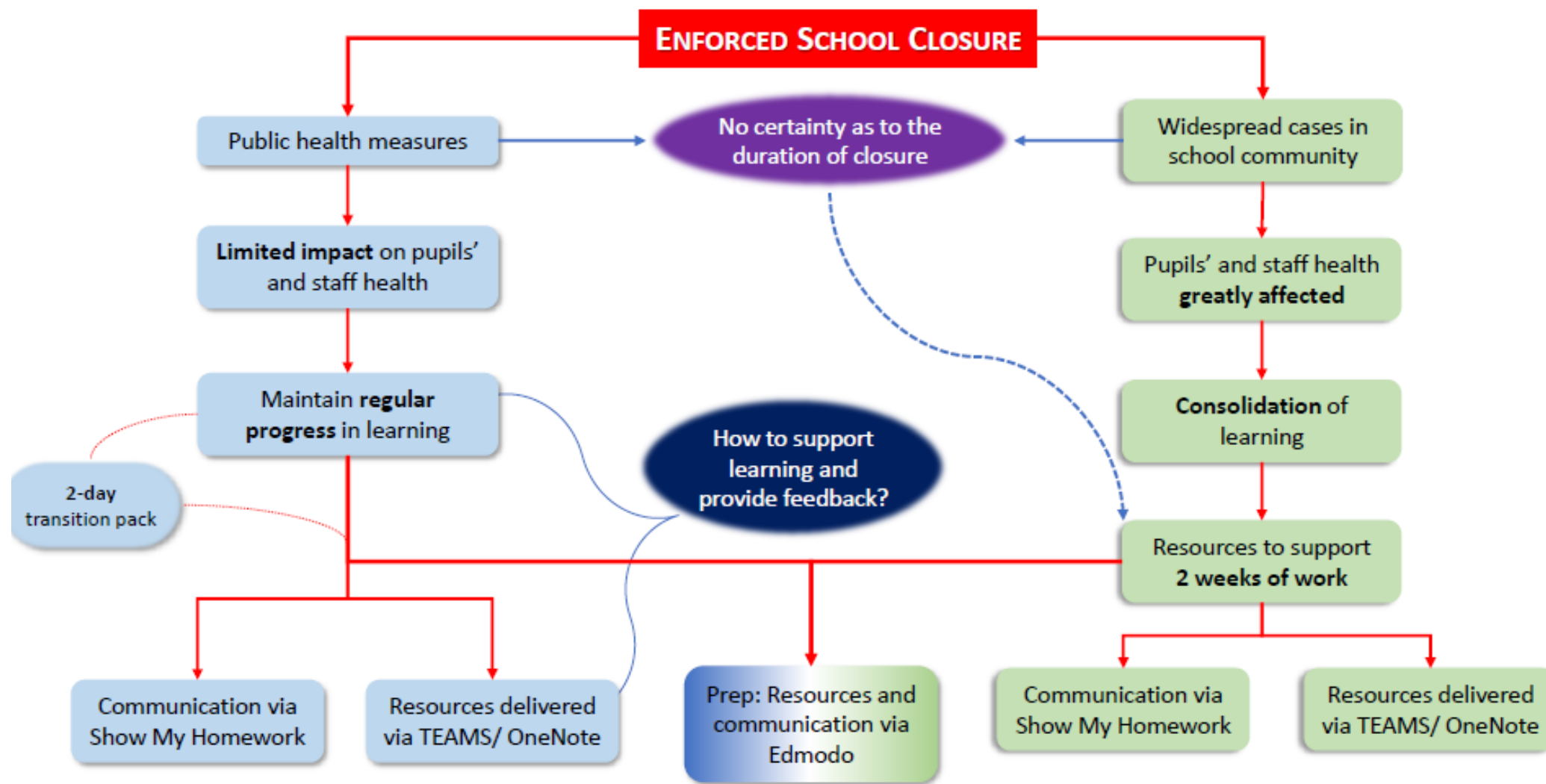




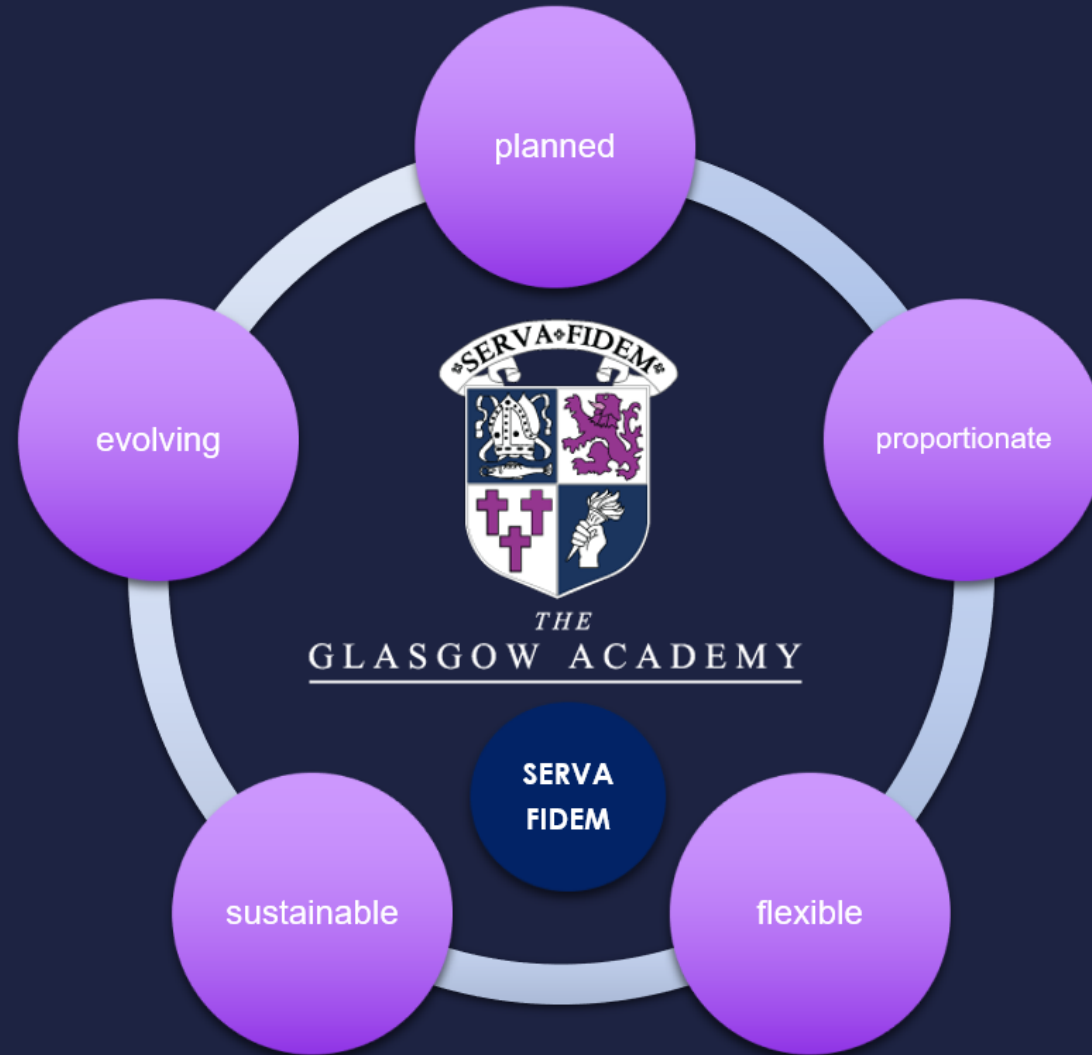
## How did we empower our teachers?

- Training and continued support
- Building confidence
- Building a community of best practice
- Celebrating learning and teaching











# Support in making the transition to on-line learning

Please find below useful resources to help with the transition period for both pupils and parents:

## **Pupil links:**

- ['Wellbeing Support when you are not in school'](#)
- ['Making learning at home effective'](#)
- Email pastoral support for pupils: [Seniorpastoral@tga.org.uk](mailto:Seniorpastoral@tga.org.uk) (account active from Thursday 19 March)

## **Parent links:**

['Supporting young people at home'](#)

['Making learning at home effective'](#)

Email contacts for parents with questions about learning provision (accounts active from Thursday 19 March):

- [S1Learning@tga.org.uk](mailto:S1Learning@tga.org.uk)
- [S2Learning@tga.org.uk](mailto:S2Learning@tga.org.uk)
- [S3Learning@tga.org.uk](mailto:S3Learning@tga.org.uk)
- [S4Learning@tga.org.uk](mailto:S4Learning@tga.org.uk)
- [S5Learning@tga.org.uk](mailto:S5Learning@tga.org.uk)
- [S6Learning@tga.org.uk](mailto:S6Learning@tga.org.uk)

The new Prep School Learning@ e-mail addresses will go live when the Prep School moves to on-line provision of our curriculum, likely to be from Monday.

<https://sway.office.com/8BowRXV3WiBPBGUJ?ref=Link&loc=play>



# Message from The Rector - 2 April 2020



## *THE* GLASGOW ACADEMY

Activate Windows



THE  
GLASGOW  
ACADEMY

<https://sway.office.com/p7a6RcoZQeKYy1aa>



# The 5 values that bind our past, present and future

## Our Values

S	ERVICE
E	NDEAVOUR
R	ESPECT
V	ALOUR
A	MBITION

## Our Code

F	AIR
I	NCLUSIVE
D	YNAMIC
E	MPOWERING
M	OTIVATING



### GLASGOW ACADEMY ROLL OF HONOUR

*Former Members of the School who  
served in the Great War*

1914-1918

GLASGOW  
JACKSON, WYLIE & CO.  
PUBLISHERS TO THE UNIVERSITY  
1933



THE  
GLASGOW  
ACADEMY